

 **DATALOGIC**

STS400™



NO READ NO CODE FUNCTION

Solution for Tires Sorting

EXPRESSLY DESIGNED FOR TIRES

STS400™ is a unique solution for Code presence detection on tires. In fact, it actually overcomes the traditional complexity of vision inspection solutions, in HW and SW deployments and maintenance, and provides unbeatable level of detection reliability.

The **STS400™** Code Presence detection is really robust and superior respect with to any other traditional working methods: it is based on the research of partial bar-code patterns and it can easily filter out normal light reflections, that challenge traditional detection methodologies as white spot research.



STS400 SOLUTION IS COST EFFECTIVE

The combination of bar-code reading and code presence detection into a single system is extremely valuable. It dramatically cuts-out costs for system integration, installation and maintenance. The ROI is shorter than any other solution with a lower level of integration.

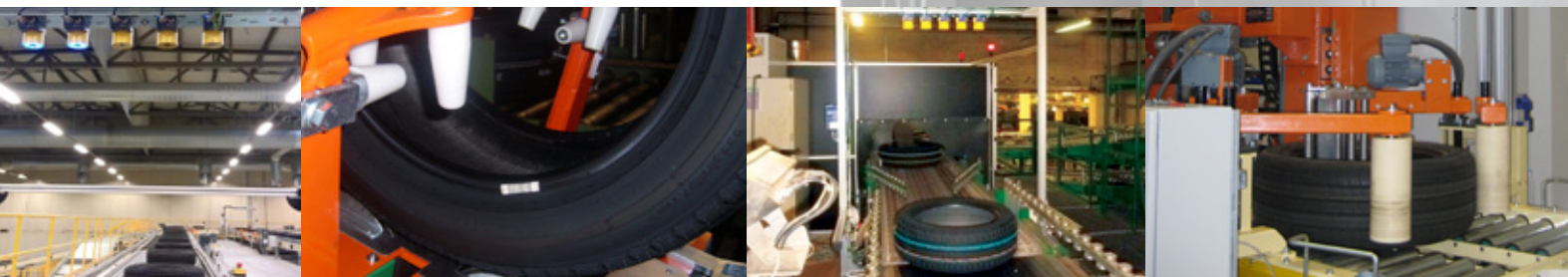
Validation of Tire Orientation on Test Machine

Tire Orientation Detection on conveyors

Validation of Label Presence after Code Sticking Machine

Validation of Label Presence after Curing Process

Coded/Uncoded tires sortation



STS400™ - NO READ NO CODE

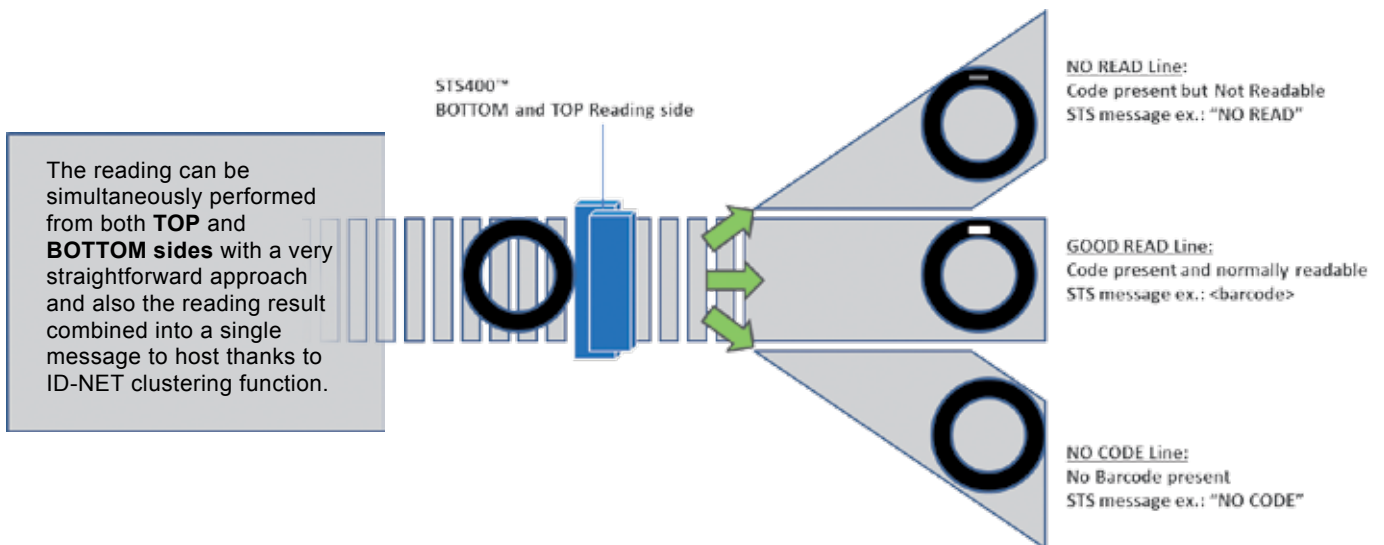
STS400™ - MORE THAN A POWERFUL CODE READING

STS400™ – Solution for Tires sorting – offers a new functionality for no code detection on tires.

This new function represents the extension of the native barcode reading capability: the “No Code” information is an ulterior level of detail as return of the barcode scanning phase and enables different handlings whether code is unreadable or missing.

Code presence detection on **STS400™** responds to a relevant need in the tires manufacturing: the very high volume production require an efficient logistic processing and tires - with and without barcode – are mixed together over same handling and transportation systems. Labeled and unlabelled tires have then to be sorted into different directions.

STS400™ accomplishes into the single scanning point a double functionality at the same time: tires get normally scanned and barcode returned for identification. Unsuccessful barcode reading attempts are differentiated according to the specific cases detected: missing code or unreadable code. With this higher level of information - **STS400™** returns - the sorting system can automatically address different tire typologies to the appropriate manufacturing processes.

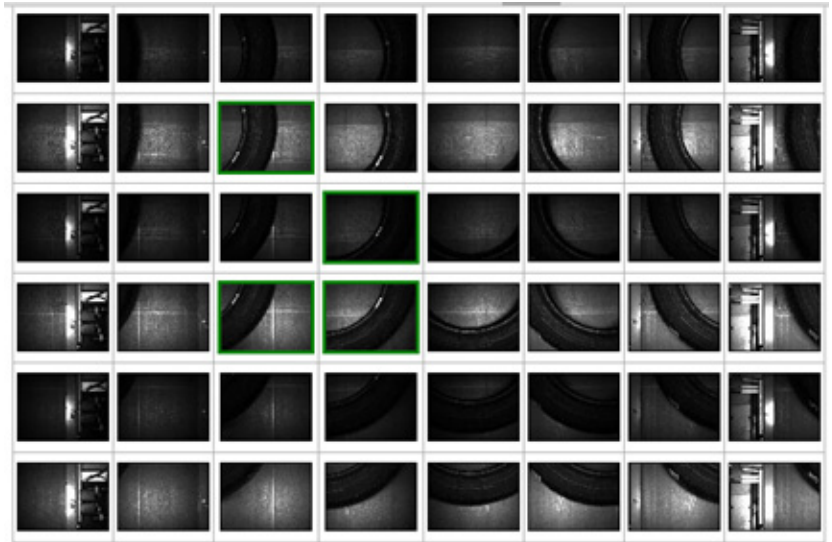
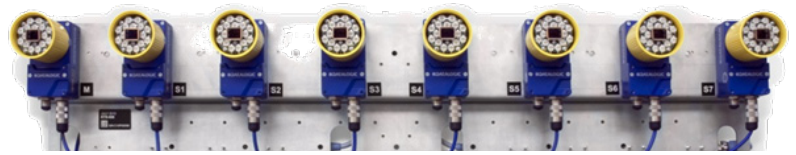


UNRIVALLED PERFORMANCE

STS400™ is a multi-head reading system, designed to support maximum detection performance and robustness: the redundancy of the multiple reading point is fundamental for stable performance: the image acquisition is performed more than once from different perspectives, providing protection from the bar-code reflectivity. Adjacent readers cover common regions generating good intrinsic redundancy and the failure of a single reader has a small effect on the overall performance of the system.

EASY TO INSTALL

STS400™ is compact and based on a self-contained structure. No issue with large scanning area requirements: STS400™ is designed to meet any typical DOF requirement in tires and easily meet the FOV of conveyor width thanks to the variable number of readers selectable. STS400 is 100% pre-assembled and calibrated –no issue with installation, configuration setup and tuning: no focusing, no height barrier and no encoder required. No integration efforts and not additional mechanical accessory are requested, as mirror, external barriers.



EASY TO USE

Datalogic WebSentinel™- IMAGES is the new option dedicated to the STS400, extending the, enabling an effective and precise analysis of processes and reading performance through archiving capabilities to captured images. Functional data and image captures can be inspected remotely with a standard Web Browser.



MODEL SELECTION TABLE

PN	Description	Linear Code Resolution	Reading Width	Dof	Min Reading Distance	Max Reading Distance	Focus Distance
	STS400™ - TOP READING STANDARD READING RANGE	mm (mils)	mm (in)	mm (in)	mm (in)	mm (in)	mm (in)
937401023	STS400-005 SOLUT TIRE SORT 5_HEAD ST RES	0,30 (12)	805 (31,7)	250 (9,8)	890 (35,0)	1140 (44,9)	1065 (41,9)
937401024	STS400-006 SOLUT TIRE SORT 6_HEAD ST RES	0,30 (12)	945 (37,2)	250 (9,8)	890 (35,0)	1140 (44,9)	1065 (41,9)
937401025	STS400-007 SOLUT TIRE SORT 7_HEAD ST RES	0,30 (11,8)	1085 (42,7)	250 (9,8)	890 (35,0)	1140 (44,9)	1065 (41,9)
937401026	STS400-008 SOLUT TIRE SORT 8_HEAD ST RES	0,30 (11,8)	1225 (48,2)	250 (9,8)	890 (35,0)	1140 (44,9)	1065 (41,9)
937401027	STS400-015 SOLUT TIRE SORT 5_HEAD HI RES	0,25 (9,8)	635 (25,0)	200 (7,9)	710 (28,0)	910 (35,8)	788 (31,0)
937401028	STS400-016 SOLUT TIRE SORT 6_HEAD HI RES	0,25 (9,8)	745 (29,3)	200 (7,9)	710 (28,0)	910 (35,8)	788 (31,0)
937401029	STS400-017 SOLUT TIRE SORT 7_HEAD HI RES	0,25 (9,8)	855 (33,7)	200 (7,9)	710 (28,0)	910 (35,8)	788 (31,0)
937401030	STS400-018 SOLUT TIRE SORT 8_HEAD HI RES	0,25 (9,8)	965 (38,0)	200 (7,9)	710 (28,0)	910 (35,8)	788 (31,0)
	STS400™ - TOP READING LONG READING RANGE	mm (mils)	mm (in)	mm (in)	mm (in)	mm (in)	mm (in)
937401037	STS400-105 SOLUT TIRE 5_HEAD LONG RANGE	0,35 (13,8)	805 (31,7)	400 (15,7)	880 (34,6)	1280 (50,4)	1065 (41,9)
937401038	STS400-106 SOLUT TIRE 6_HEAD LONG RANGE	0,35 (13,8)	945 (37,2)	400 (15,7)	880 (34,6)	1280 (50,4)	1065 (41,9)
937401039	STS400-107 SOLUT TIRE 7_HEAD LONG RANGE	0,35 (13,8)	1085 (42,7)	400 (15,7)	880 (34,6)	1280 (50,4)	1065 (41,9)
937401040	STS400-108 SOLUT TIRE 8_HEAD LONG RANGE	0,35 (13,8)	1225 (48,2)	400 (15,7)	880 (34,6)	1280 (50,4)	1065 (41,9)
	STS400™ - BOTTOM AND HOOK CHAIN	mm (mils)	mm (in)	mm (in)	mm (in)	mm (in)	mm (in)
937400018	STS400-205 SOL TIRE BOTTOM 5_HD ST RES	0,30 (12)	754 (29,7)	140 (5,5)	317 (12,5)	457 (18,0)	380 (15,0)
937400019	STS400-206 SOL TIRE BOTTOM 6_HD ST RES	0,30 (12)	894 (35,2)	140 (5,5)	317 (12,5)	457 (18,0)	380 (15,0)
937400020	STS400-305 SOL TIRE HOOK CH. 5_HD ST RES	0,30 (12)	748 (29,4)	155 (6,1)	405 (15,9)	560 (22,0)	483 (19,0)
937400021	STS400-306 SOL TIRE HOOK CH. 6_HD ST RES	0,30 (12)	888 (35,0)	155 (6,1)	405 (15,9)	560 (22,0)	483 (19,0)
	MATRIX 410™ ATS ASSEMBLY FOR TIRE SOLUTIONS	mm (mils)	mm (in)	mm (in)	mm (in)	mm (in)	mm (in)
937401035	MATRIX 410 ATS-000 ASSEMBLY FOR STS400-00X	0,30 (11,8)	245 (9,6)	250 (9,8)	890 (35,0)	1140 (44,9)	1065 (41,9)
937401036	MATRIX 410 ATS-010 ASSEMBLY FOR STS400-01X	0,25 (9,8)	195 (7,7)	200 (7,9)	710 (28,0)	910 (35,8)	788 (31,0)
937401041	MATRIX 410 ATS-100 ASSEMBLY FOR STS400-10X	0,35 (13,8)	245 (9,6)	400 (15,7)	880 (34,6)	1280 (50,4)	1065 (41,9)
937400022	MATRIX 410 ATS-200 ASSY FOR STS400-20X	0,30 (12)	194 (7,6)	140 (5,5)	317 (12,5)	457 (18,0)	380 (15,0)
937400023	MATRIX 410 ATS-300 ASSY FOR STS400-30X	0,30 (12)	188 (7,4)	155 (6,1)	405 (15,9)	560 (22,0)	483 (19,0)

NOTES

CODE SYMBOLOGIES SUPPORTED

The Codes presence detection is specifically implemented for tires applications. Only the following code symbologies are supported:

ITL2/5 CODE128 CODE39

FIRMWARE DISTRIBUTION

No Code-No Read Function upgrade is distributed free-of-charge. The function is not included into the STS400 delivery software package.

For software availability and download, please contact your Datalogic Industrial Automation Local Office.



EUROPE

DATALOGIC AUTOMATION

Headquarters

Via Lavino, 265
40050 Monte San Pietro
Bologna - Italy
Tel. +39 051/6765611
Fax +39 051/6759324
info.automation.it@datalogic.com

DATALOGIC AUTOMATION Iberia

Sucursal en España

C/ Samonta, 25 4ª Planta
08970 Sant Joan Despí
Barcelona - Spain
Tel. +34 (0)93/4772059
Fax +34 (0)93/477272
info.automation.es@datalogic.com

DATALOGIC AUTOMATION AB

Höjrodergatan 21
21239 Malmö - Sweden
Tel. +46 (0)40/385000
Fax +46 (0)40/385001
info.automation.se@datalogic.com

DATALOGIC AUTOMATION Benelux

Newtonweg 3
4104 BK Culemborg - The Netherlands
Tel. +31 345/589489
Fax +31 345/511419
info.automation.nl@datalogic.com

DATALOGIC AUTOMATION S.r.l.

Niederlassung Central Europe

Carl-Zeiss Str. 31
73230 Kirchheim/Teck
Germany
Tel. +49 07021/509700
Fax +49 07021/5097029
info.automation.de@datalogic.com

DATALOGIC AUTOMATION UK

Datalogic House
Dunstable Road, Redbourn
Hertfordshire
England
AL3 7PR
Tel. +44 (0) 1582 791750
Fax +44 (0) 1582 791769
info.automation.uk@datalogic.com

DATALOGIC AUTOMATION S.r.l.

Succursale en France

Le Parc Technologique de Lyon
333 cours du 3ème Millénaire - Le Pôle
69800 Saint Priest - France
Tél. +33 (0)4/72476180
Fax +33 (0)4/72470721
info.automation.fr@datalogic.com

AMERICA

DATALOGIC AUTOMATION Inc

511 School House Road
Telford, PA 18969-1196 - United States
Tel. +1-800-BAR-CODE or +1-215-723-0981
Fax +1-215-721-5551
info.automation.us@datalogic.com

DATALOGIC AUTOMATION Inc

Machine Vision

6301 Old Shakopee Road
Minneapolis, MN 55438 - United States
Tel. +1-952-996-9500
Fax +1-952-996-9501
info.vision.ia@datalogic.com

ASIA

DATALOGIC AUTOMATION Asia Ltd

Floor 20, Room 2017, Building 2,
16 West Nan San Huan Road,
Fengtai District, Beijing, China
Tel: +86 (0)21-5836 6692
Fax: +86 (0)21-5836 6695
info.automation.cn@datalogic.com

DATALOGIC AUTOMATION Asia Ltd

1108B, Blocks 5, Huayangnian Meinian Plaza,
West Nanhai Road, Nanshan District,
Shenzhen, China
Tel: +86 (0)755-8629 6779
Fax: +86 (0)755-8628 1280
info.automation.cn@datalogic.com

DATALOGIC AUTOMATION Asia Ltd

Suite 1301, Hua Rong Plaza,
1289 South Pudong Road, Pudong District,
Shanghai 200120 - China
Tel: +86 (0)21-5836 6692
Fax: +86 (0)21-5836 6695
info.automation.cn@datalogic.com

DATALOGIC AUTOMATION Asia Ltd

Unit 1-3, 7/F, Yuen Long Trading Centre,
33 Wang Yip Street West, Yuen Long, NT.
Hong Kong
Tel +852 2785/3912
Fax +852 2785/3913
info.automation.hk@datalogic.com

IDEC DATALOGIC.CO. Ltd

10-40, Mikuni-Honmachi 1-Chome,
Yodogawa-ku, Osaka 532 0005, Japan
Tel. +81(6) 6398/3200
Fax +81 (6) 6398/3202
www.idljp.com

AUSTRALIA - NEW ZEALAND

DATALOGIC AUTOMATION Pty Ltd

Unit 130, 45 Gilby Road
Mt Waverley
Victoria, 3149 - Australia
Tel. +61 (0)3/95589299
Fax: +61 (0)3/95589233
info.automation.au@datalogic.com



www.datalogic.com

Product and Company names and logos referenced may be either trademarks or registered trademarks of their respective companies. We reserve the right to make modifications and improvements.

Rev. 00, 01/2013



9C513300E

